



Laboratory Systems | Cleanroom Systems

Safe | Ergonomic | Functional | Sustainable

About Us



Smartlab is a scientific laboratory furniture and systems manufacturing and supply company that provides safe, ergonomic, functional and sustainable solutions for the research and scientific facilities.

Besides laboratory systems, Smartlab is also the manufacturer of cutting-edge cleanroom panels, doors, passboxes and cleanroom systems. Elevate your cleanroom experience with our specialized solutions, crafted for optimal efficiency, hygiene and cleanliness.

LABORATORY SYSTEMS:

- Fume Cupboards
- Laboratory Benches
- Washing Units
- Balance Tables
- Laboratory Cabinets
- Chemical Safety Storage Cabinets
- Gas Cylinder Safety Storage Cabinets
- Service Units *electrical/mechanical/gas line*

CLEANROOM SYSTEMS:

- Cleanroom Engineering
- Cleanroom Panels
- Passboxes
- Cleanroom Doors
- Cleanroom Ceiling
- Cleanroom Accessories

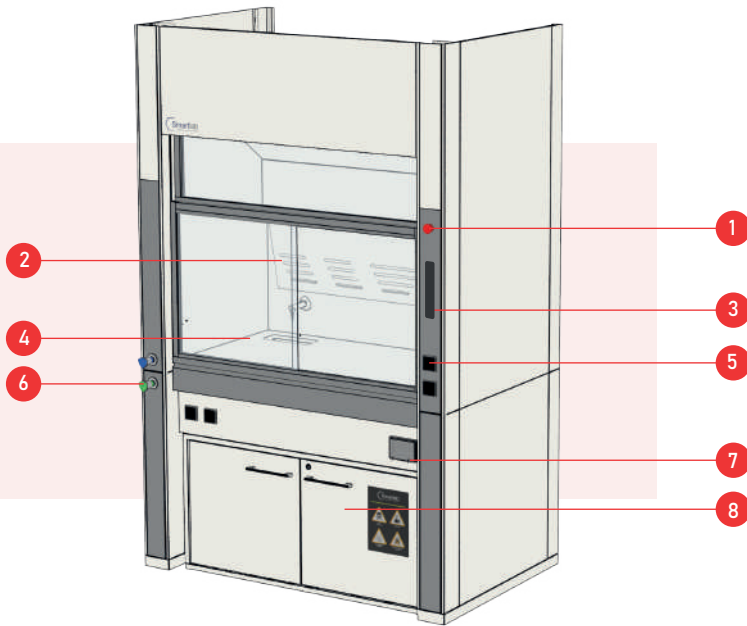
Laboratory Systems



Fume Hoods

Fume hoods are systems for safety of laboratory works with hazardous amount of gases, smoke, particle and liquid substances. Smartlab Standard fume hoods are designed for ergonomic usage needs for chemical works with high concentration and low corrosive chemicals. Smartlab fume hoods manufactured according to EN 14175 EU standards to increase performance and ensure health safety. Owns CE certificate for user and environment safety. Drainage management systems is offered optionally.

Standart Fume Hoods



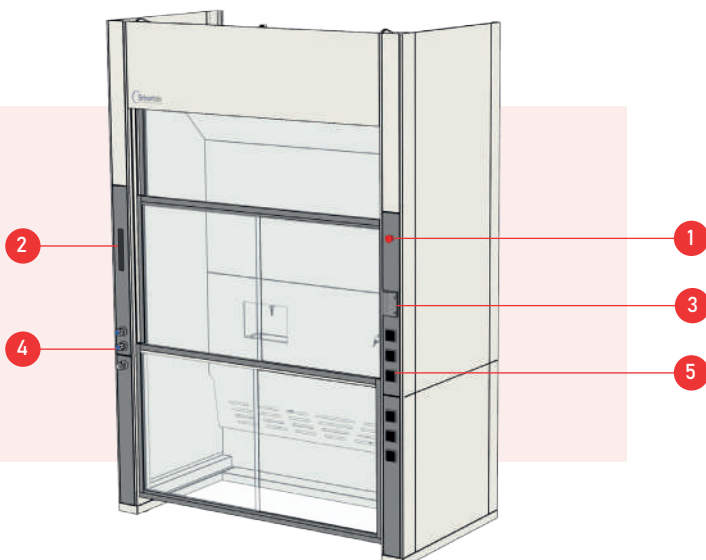
1. Emergency Button
2. Sliding Glass Door
3. EN 14175 Monitoring System
4. Worktop
5. Electrical Sockets
6. Gas & Water Valves
7. Fuse box
8. Chemical storage unit(Etiklet)

Optional:

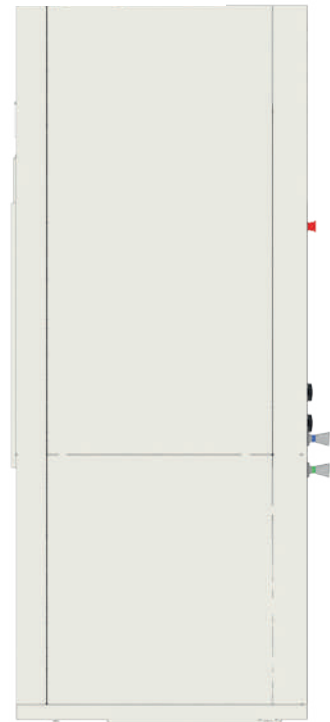
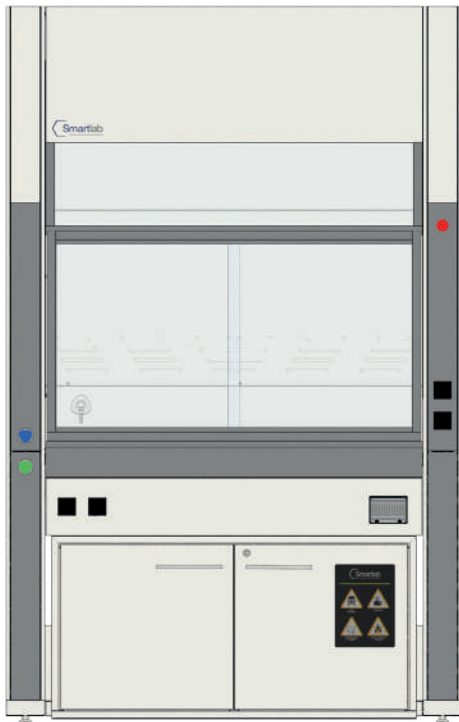
- Drain magement system
- Fire resistant safety cabinets

*High resistant fume hoods are optional interlining with ceramic and special coated metal parts to meet aggressive chemical resistency.

Walk-in Fume Hoods



1. Emergency Button
2. EN 14175 Monitoring System
3. Fuse box
4. Gas & Water Valves
5. Electrical Sockets



DIMENSIONS

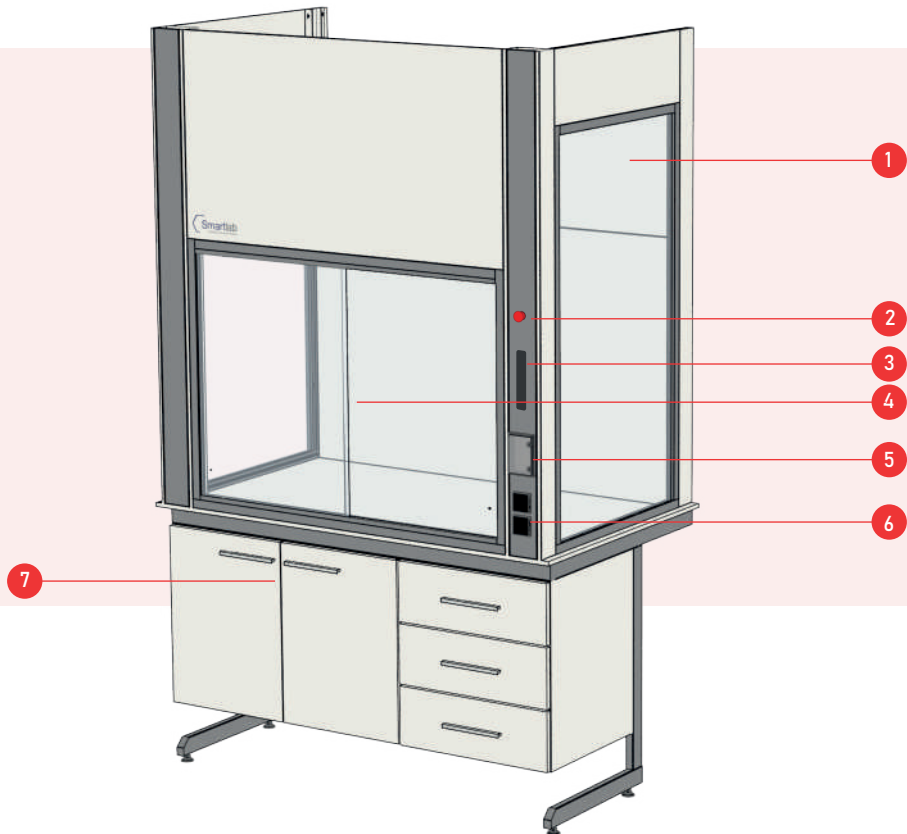
(mm)

Width	1200 / 1500 / 1800
Depth	950
Height	2350/2650
Internal Width	900 / 1200 / 1500
Internal Depth	730
Internal Height	1400
Work Bench Height	900

SPECIFICATIONS

Sash	Aluminum Framed Safety Glass with Horizontal and Vertical Movement
Construction	Electrostatic Epoxy Powder Coated Galvanized Steel
Working Surface	<ul style="list-style-type: none"> • Industrial Ceramic • Solid Grade Laminate • Epoxy Resin • Stainless Steel

Ventilated Work Station



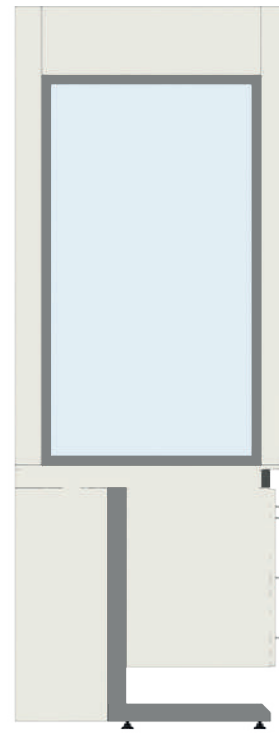
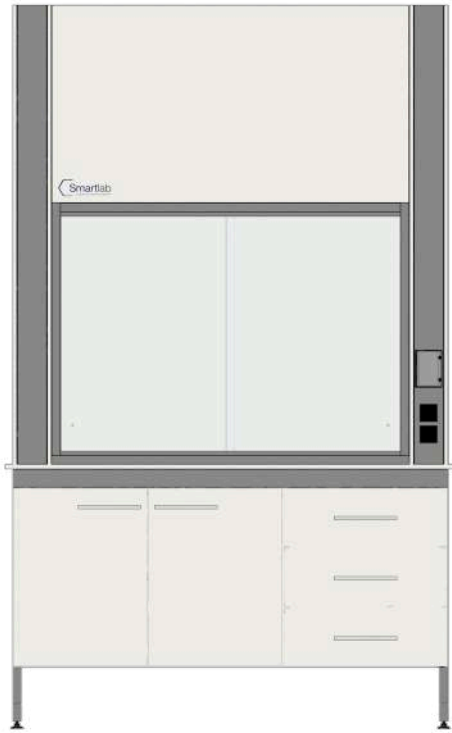
Smartlab's Ventilated Work Cabinet sets the standard for safety and functionality in your laboratory. Meticulously designed, this work cabinet combines a secure storage solution with efficient ventilation. Engineered to excel, it ensures optimal air quality while providing a dedicated space for your work essentials. Customize your setup for precision and practicality. With Smartlab's commitment to excellence, trust our Ventilated Work Cabinet to enhance safety and efficiency in your laboratory operations.

1. Safety glass
2. Emergency button
3. Control/Monitoring unit
4. Slide glasses with horizontal movement
5. Fusebox
6. Electrical sockets
7. Laboratory bench



*Available for wall bench and island benches

**Customization is available in accordance with customer needs



DIMENSIONS

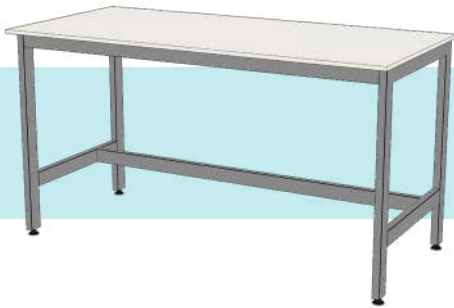
(mm)

Width	900 / 1200 / 1500 / 1800 2100 / 2400 / 2700 / 3000 / 3500
Depth	900
Height	1530 / 2430 (with work bench)

SPECIFICATIONS

Sash	Aluminum Framed Safety Glass with Horizontal and Vertical Movement
Construction	Electrostatic Epoxy Powder Coated Galvanized Steel
Working Surface	<ul style="list-style-type: none"> • Industrial Ceramic • Solid Grade Laminate • Epoxy Resin • Stainless Steel

Laboratory Workbenches



H - System Laboratory Workbench

H-system workbenches offer a robust structure and they are designed to be durable.



C - System Laboratory Workbench

C-system workbenches offer ease of use and cleaning with a modern appearance.



On-Plinth Laboratory Workbench

With plinth base this workbench offers more storage area.



Mobile Laboratory Workbench

Mobile benches provides mobility in your laboratory area.

Worktop Options

Stainless Steel

Stainless steel's key advantage is its resistance to rust, stains, and corrosion, making it ideal for laboratory environments requiring hygiene and durability. Its aesthetic appeal, low maintenance, and ability to withstand high temperatures further enhance its popularity.



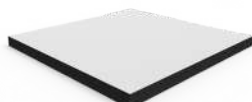
Epoxy Resin

Epoxy resin offers a durable, chemically resistant, and easy-to-clean surface. It prevents staining, withstands high temperatures, and provides mechanical strength, ensuring countertop longevity. Customizable colors and patterns add aesthetic versatility.



Solid Grade Laminate

SGL resists moisture, chemicals, impact, and scratching. It's easy to clean, available in various colors, and perfect for high-traffic areas. Ideal for commercial, healthcare, and educational settings due to its durability and versatility.



Industrial Ceramic

Industrial ceramics for laboratory worktops offer chemical resistance, high-temperature tolerance, scratch resistance, and hardness. They feature non-porous surfaces, easy maintenance, hygiene, stain resistance and aesthetic options.



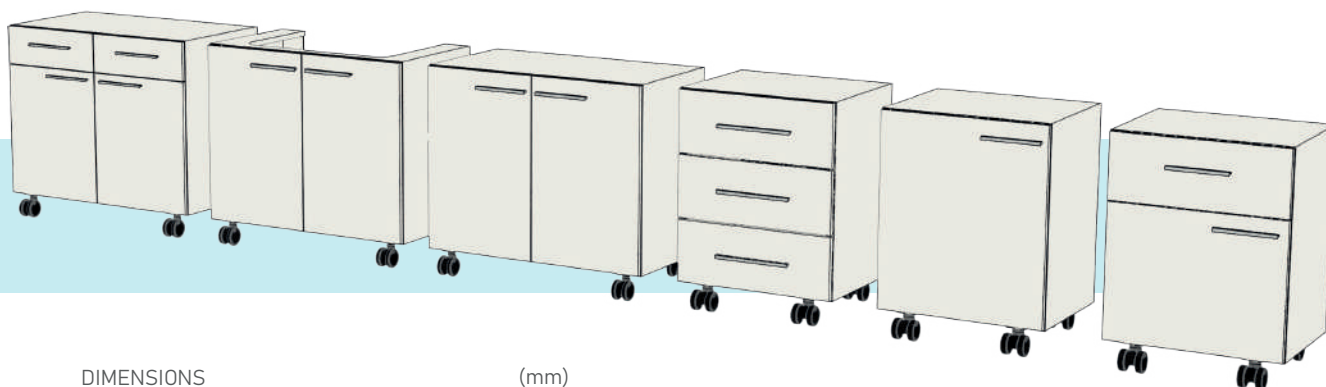
Under Bench Cabinets

Suspended Bench Cabinets for C-System



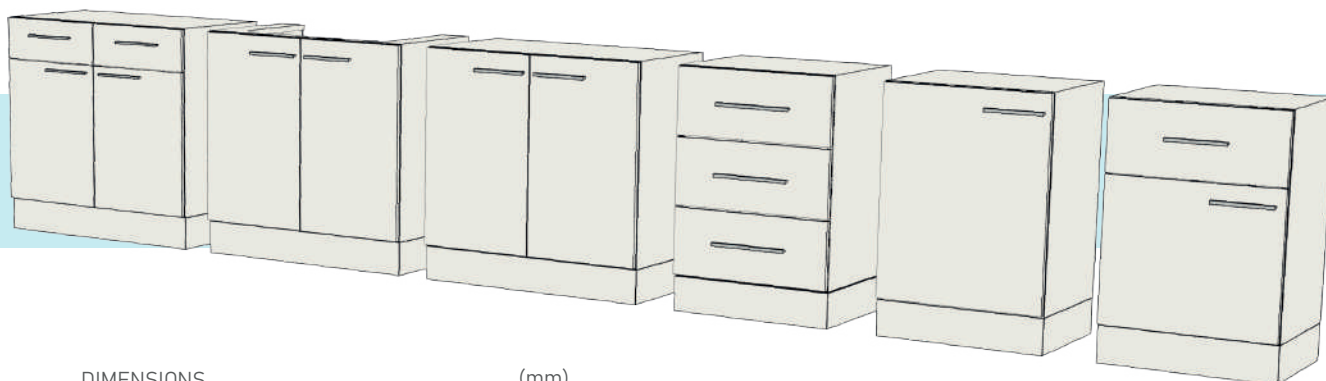
DIMENSIONS		(mm)
Width	400 / 450 / 500 / 550 / 600	750 / 800 / 850 / 900 / 950 / 1000
Depth		500
Height		450

Mobile Bench Cabinets



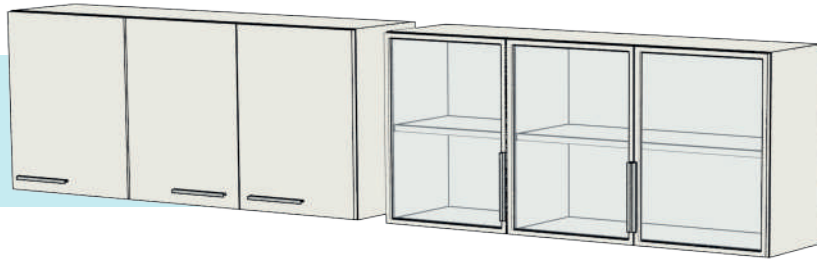
DIMENSIONS		(mm)
Width	400 / 450 / 500 / 550 / 600	750 / 800 / 850 / 900 / 950 / 1000
Depth		500
Height		600

On-Plinth Bench Cabinets

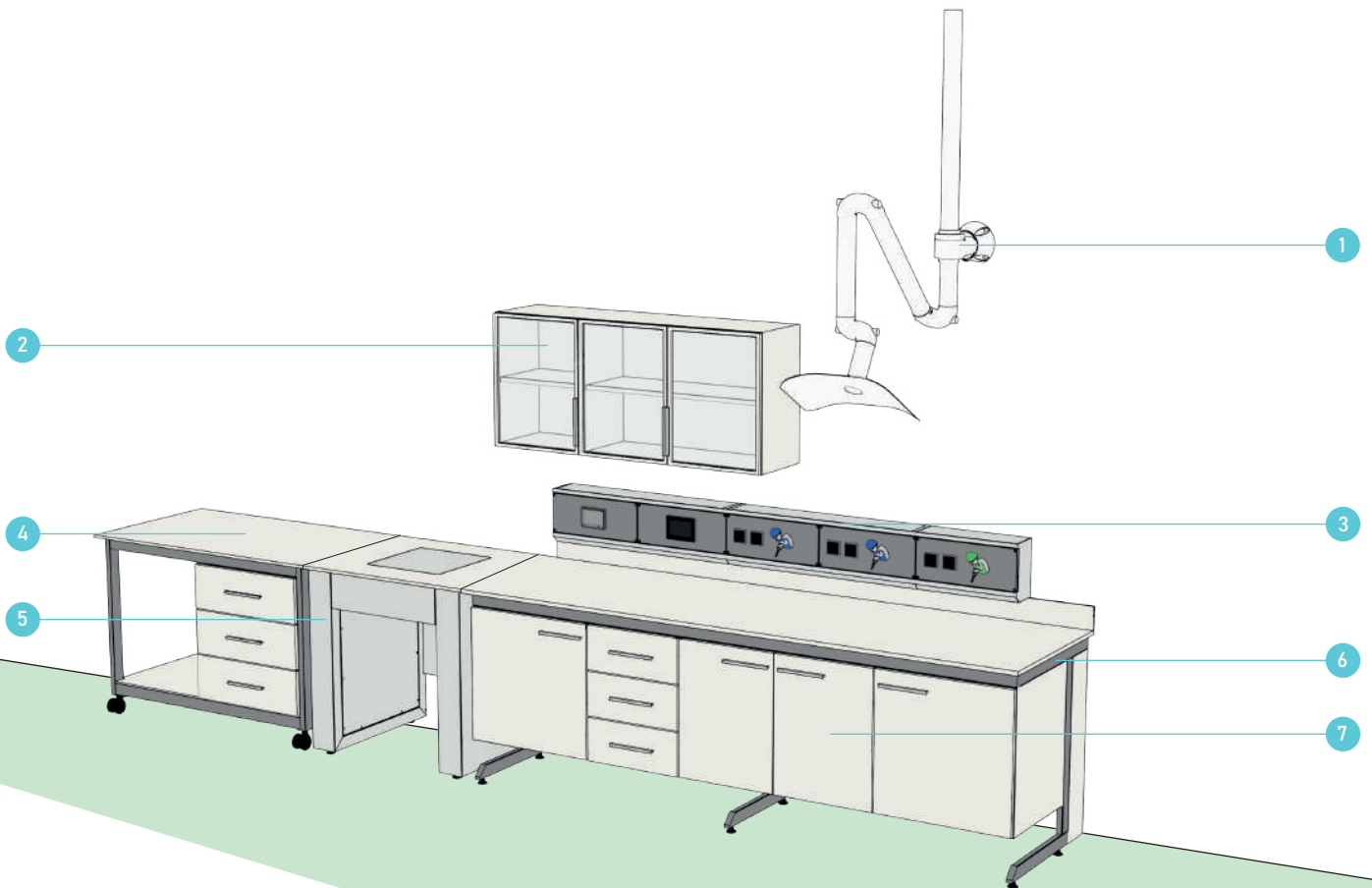


DIMENSIONS		(mm)
Width	400 / 450 / 500 / 550 / 600	750 / 800 / 850 / 900 / 950 / 1000
Depth		500
Height		600

Bench Top Cabinets



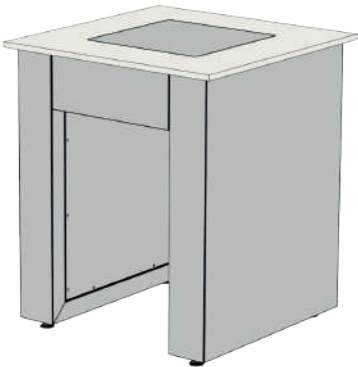
DIMENSIONS	(mm)
Width	400 / 450 / 500 / 550 / 600 750 / 800 / 850 / 900 / 950 / 1000
Depth	350
Height	500 / 600 / 700



1. Local extractor
2. Bench top cabinets
3. Service unit
4. Mobile work bench
5. Balance table
6. C - construction profile
7. Suspended bench cabinets

Laboratory Instruments

Balance Table



Smartlab's Balance Tables is maintaining precision and stability. Engineered for enduring performance, these tables seamlessly optimize your weighing procedures. Tailor your setup to meet the most demanding requirements.

DIMENSIONS	(mm)
Width	750 / 900
Depth	750 / 900
Height	750 / 900

Local Smoke Extactor Arm



Local extactor arms are constructed from durable and long-lasting materials designed to withstand corrosive fumes, gases, and vapors. Components such as springs, screws, and support rods are made from stainless steel, while other plastic parts are crafted from polypropylene (PP), and the pipe material is anodized aluminum.

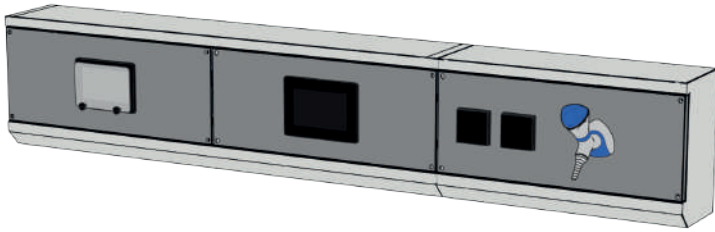
Carbon Filtered Air Purifier



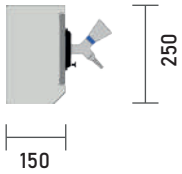
Smartlab's Carbon Filtered Air Purifier ensures the safety of chemical storage cabinets. Engineered for peak performance, it effectively eliminates harmful chemical fumes and contaminants. By maintaining air quality standards, it reduces the risk of exposure, making it essential in laboratory and industrial settings. Choose Smartlab for superior chemical storage safety.

Service Units

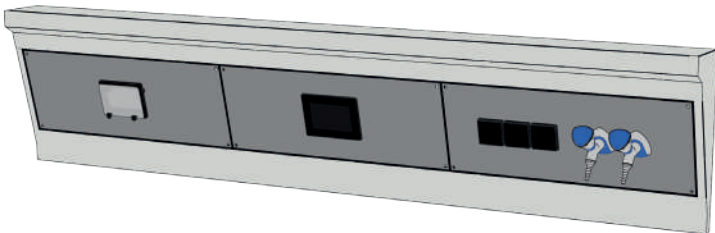
Wall Type Service Unit I



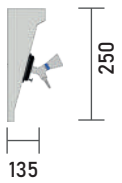
The Wall Type Service Unit is adjustable and modular, offering a range of options to meet your preferences. Its flexible design ensures it can adapt to various applications.



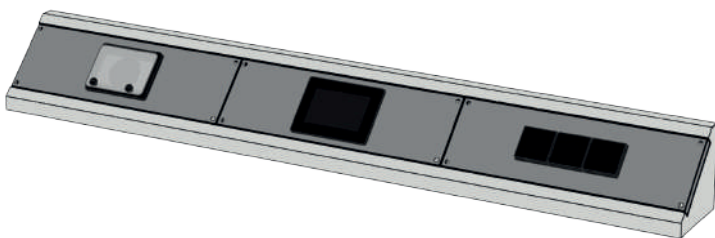
Wall Type Service Unit II



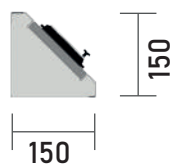
The Wall Type Service Unit II toffers various options to meet your needs. Its angled, adjustable, and modular design allows for optimal customization, ensuring the units can be configured for diverse applications.



Wall Type Service Unit III

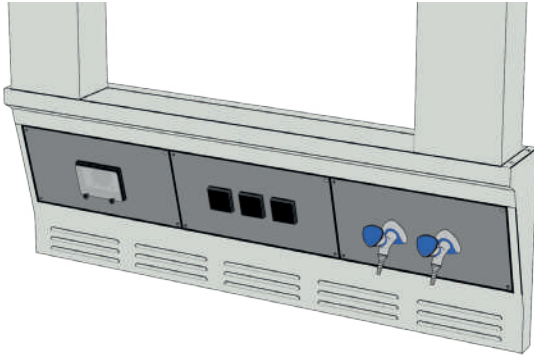


The Wall Type Service Unit III provides easy access to service units with its unique shape. It is adjustable and modular, allowing for customized configurations to suit different requirements.



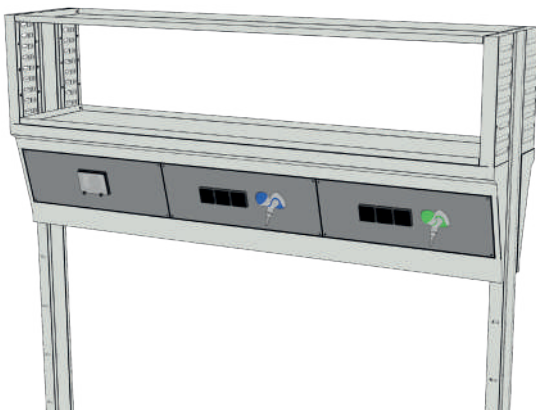
Service Units

Island Bench Type Suspended Service Unit I



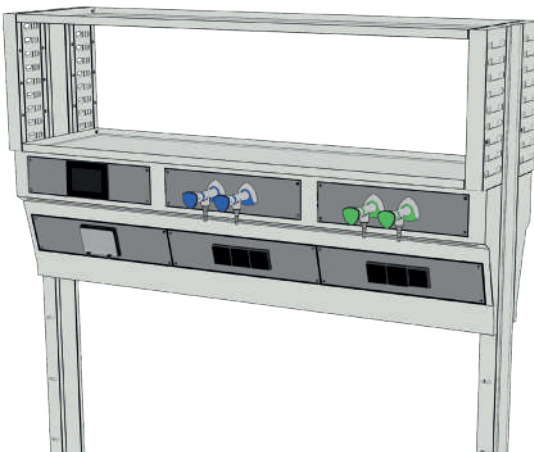
The Suspended Service Unit, hung from the ceiling, features an adjustable height and modular design for customizable options. Its flexible structure adapts to various applications, ensuring efficiency and versatility. Ideal for modern environments, it combines functionality with aesthetic appeal.

Island Bench Type Service Unit I

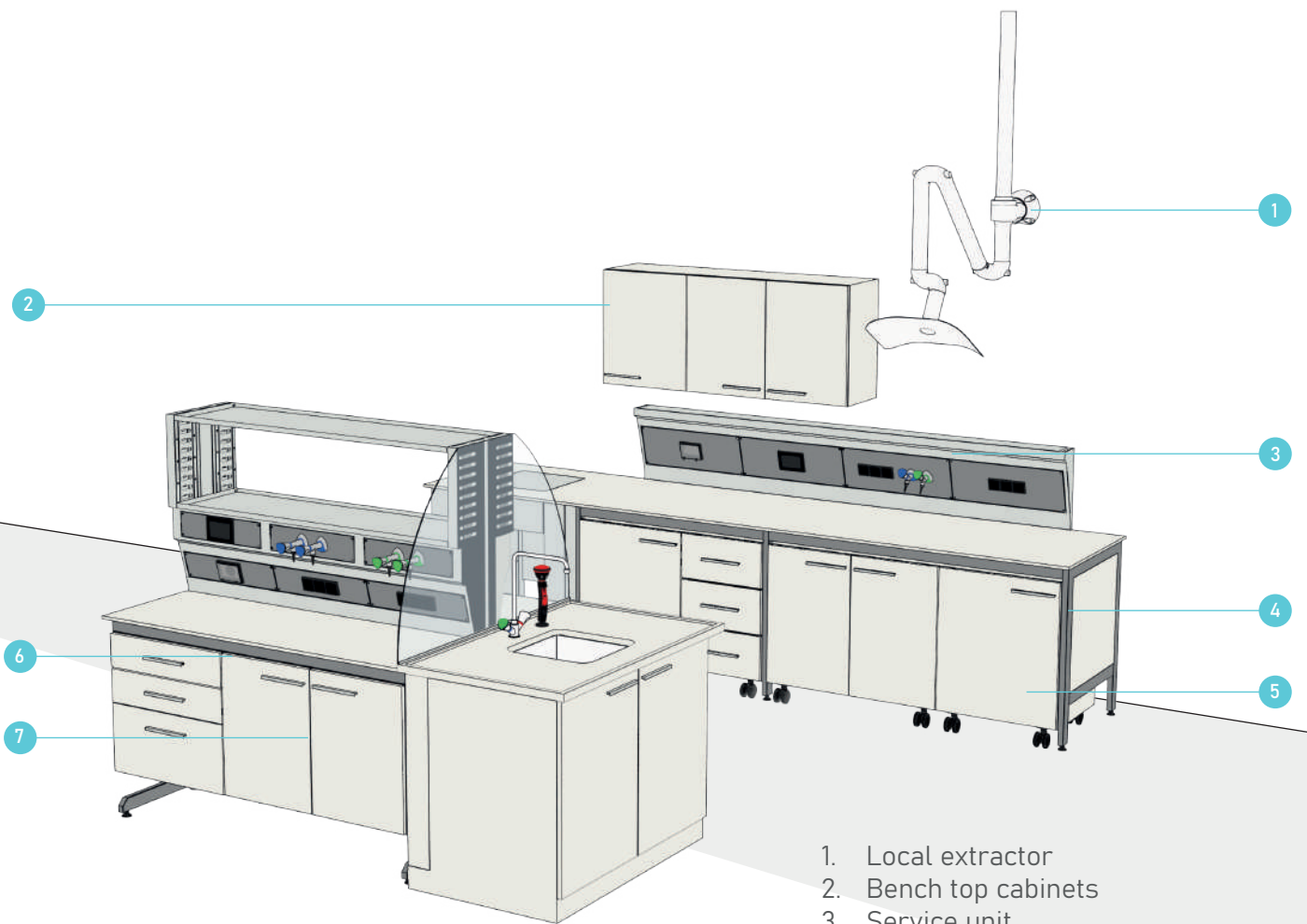


The Island Bench Type Service Unit I, installed inground with profiles, features integrated pegboards and shelves for ample storage and easy access to tools. Its modular design and sturdy construction ensure efficiency and a professional appearance in any laboratory or industrial setting.

Island Bench Type Service Unit II



The Island Bench Type Service Unit II, installed inground with profiles, offers an expanded service area for maximum functionality. Integrated pegboards and shelves provide ample storage and easy access to tools. Its modular design and robust construction ensure efficiency and a professional appearance.



1. Local extractor
2. Bench top cabinets
3. Service unit
4. H - construction profile
5. Mobile bench cabinets
6. Island C - construction profile
7. Suspended bench cabinets



1. 90 Minutes Fire Resistant Chemical Safety Storage Cabinet
2. Bench top cabinets
3. Eye Shower
4. Draining Board
5. Wall Type Service Unit III
6. Chemical Safety Storage Cabinet

Chemical Storage Cabinets

90 Minutes Fire Resistant Chemical Safety Storage Cabinet

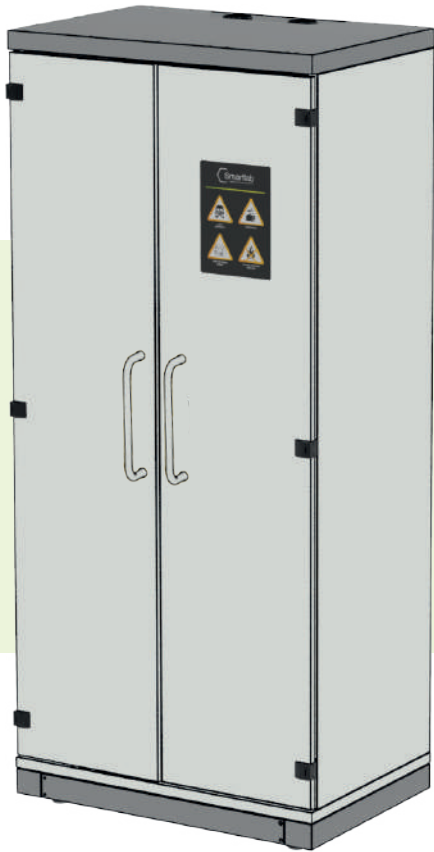


Smartlab's fire-resistant chemical storage cabinet is the result of precision engineering, designed to offer unparalleled protection against the hazards of chemical storage by significantly enhancing fire resistance. It plays a crucial role in safeguarding valuable chemicals and mitigating the risk of fire spread.

• **Fire resistance of 90 minutes**, type-tested in accordance with **EN 14470-1**

DIMENSIONS	(mm)
Width	1200
Depth	620
Height	2000





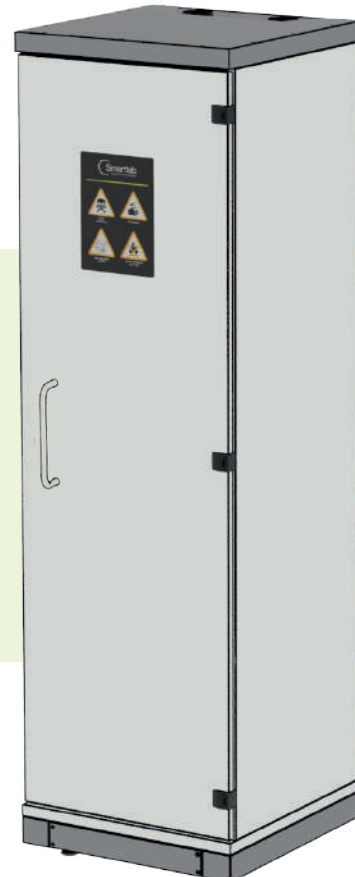
Chemical Safety Storage Cabinet

Chemical Safety Storage Cabinet is designed to securely store hazardous chemicals, ensuring safety in your workspace. With robust construction and advanced safety features, it prevents spills and accidents. Ideal for laboratories, industrial settings, and educational institutions, it meets all regulatory standards for handling dangerous substances.

DIMENSIONS	(mm)
Width	600/900/1200
Depth	620
Height	2000

Gas Cylinder Safety Storage Cabinet

Gas Cylinder Safety Storage Cabinet ensures the secure storage of gas cylinders, enhancing safety and compliance in your workspace. Featuring sturdy construction and advanced safety features, it minimizes the risk of accidents and ensures safe handling. Perfect for laboratories, industrial environments, and educational institutions, this cabinet adheres to all regulatory standards for the safe storage of gas cylinders.



DIMENSIONS	(mm)
Width	600/900/1200
Depth	620
Height	2000

Cleanrooms



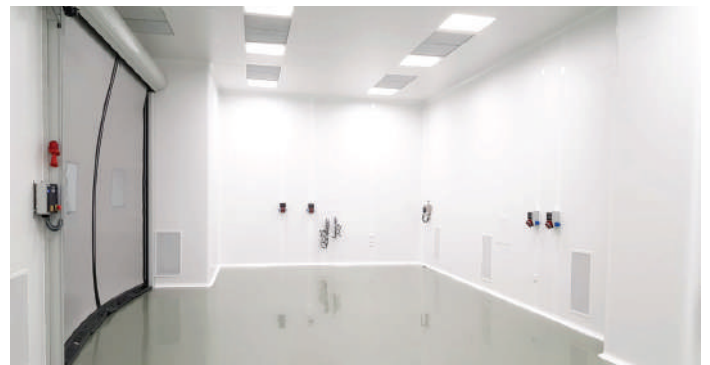
Precise Engineering Solutions for Cleanroom

Cleanrooms are hygienic private rooms that the quantity of airborne particle concentrations are controlled and classified. They are designed, constructed and operated in a manner to control the entrance, generation and retention of particles inside the rooms. Sealed panels, ceilings, Pass-Through Boxes and door systems provide an isolated and conditioned environment. All products used in the construction are hygienic and antibacterial that they do not decontaminate.

Smartlab designs and constructs cleanrooms compliant with ISO 14644 standards. All turnkey projects, after-sales service and validation services are provided by SMARTLAB's technical staff.

What We Do?

- Architectural Design
- Facility Planning
- HVAC Systems
- Panel Systems
 - Coated Galvanized Metal
 - HPL(High Pressure Laminate)
- Hygienic Suspended Ceiling Systems
- Passbox Systems
- Airlock Systems
- Interlock Systems
- Hygienic Flooring



Cleanroom for Laboratory Systems





“Imagination is the beginning of creation. You imagine what you desire, you will what you imagine, and at last, you create what you will.”

George Bernard Shaw



The Smartest Way of The Laboratory Solutions!



Harbiye Mh. Bostan Sk.
No:15 İç Kapı No: 5
Şişli - İstanbul 34367
info@smartlabsystems.com
www.smartlabsystems.com